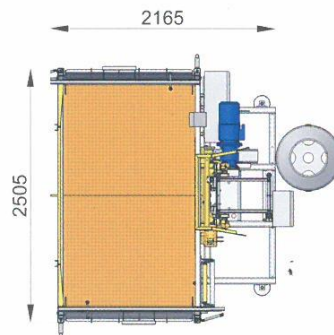
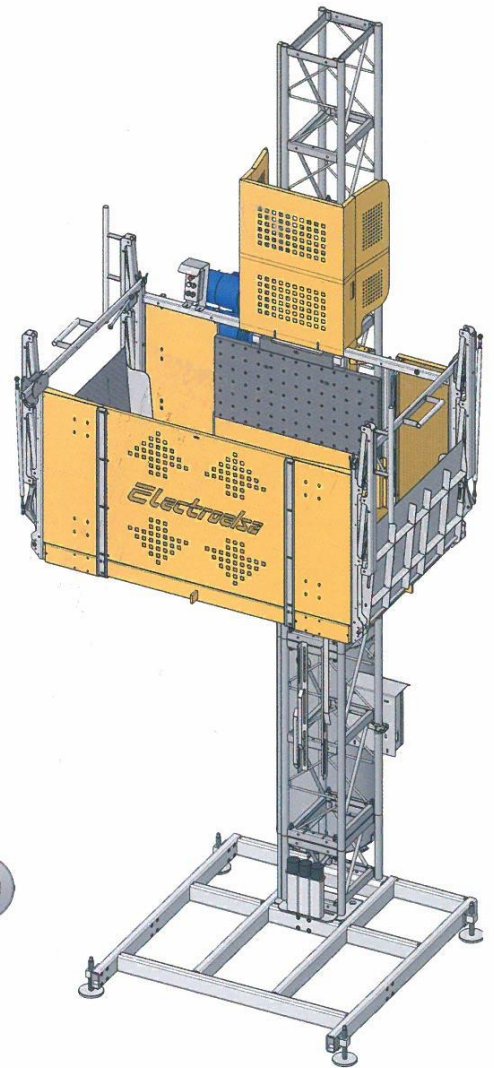
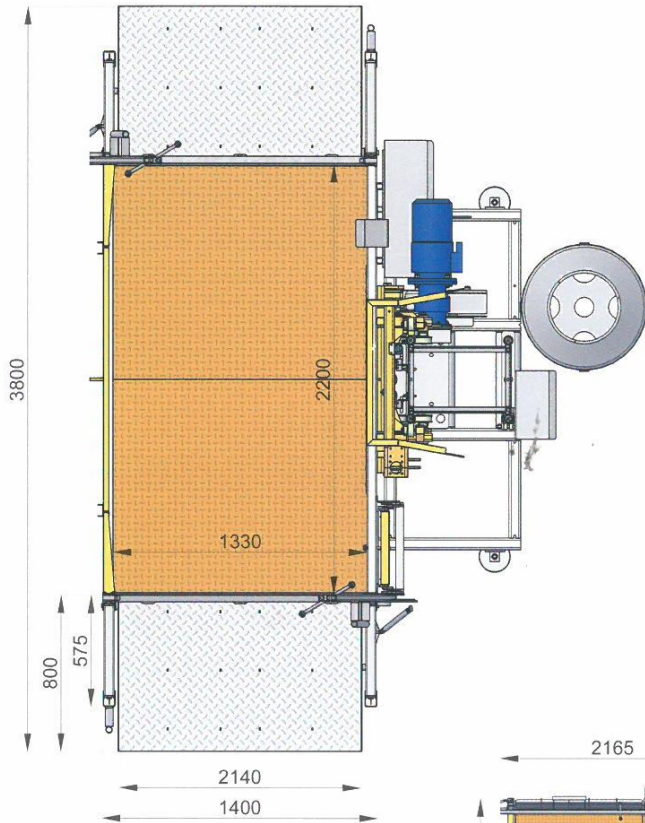


**EHPM 2500/15** colonna rettangolare

**EHM 2500/15** colonna rettangolare



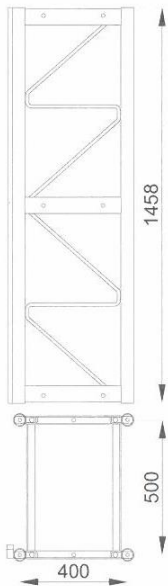
	1500 kg trifase	<b>EHM</b>
☺	+1400 kg	<b>EHPM</b>
☺☺	+1300 kg	
☺☺☺	+1200 kg	
☺☺☺☺	+1100 kg	
☺☺☺☺☺	+1000 kg	
☺☺☺☺☺☺	+900 kg	
☺☺☺☺☺☺☺	+800 kg	
☺☺☺☺☺☺☺☺	+700 kg	

**PIATTAFORMA DI TRASPORTO / MONTACARICHI  
TRANSPORT PLATFORM / MATERIAL HOIST**

Dati tecnici	Technical Data	Données Techniques	Datos Tecnicos	EHPM 2500/15 trifase	EHM 2500/15 trifase
Capacità di carico	Capacity	Charge Nominale	Capacidad de carga	1500 kg	1500 kg
Velocità di sollevamento	Lifting speed	Vitesse de lévage	Velocidad de elevación	12 m/min	20 m/min
Massima altezza ancorata	Max anchored height	Hauter max avec ancrages	Altura max con anclajes	120 m	120 m
Dimensioni interne cesta	Platform dimensions	Dimensions du plancher	Dimensiones de cabina	2,28 x 1,34 m	2,28 x 1,34 m
Tensione alimentazione	Input power range	Tension d'alimentation	Tensión de red	380/415 V 50/60 Hz	380/415 V 50/60 Hz
Interruttore protezione linea	Protection switch	Interrupteur de protection	Interruptor de protección	16 A	32 A
Potenza servizio continuo	Power of the motors	Puissance des moteurs	Potencia de motorreductores	2 x 3 kW	2 x 4 kW
Corrente di spunto	Starting current	Ampérage au démarrage	Intensidad de arranque	90 A	130 A
Minima potenza di linea consigliata	Minimum line power suggested	Min. puissance de ligne conseillée	Min. potencia de linea	10 kW	12 kW

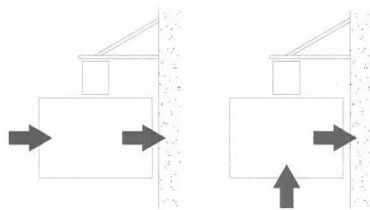
**EHPM 2500/15** colonna rettangolare

**EHM 2500/15** colonna rettangolare

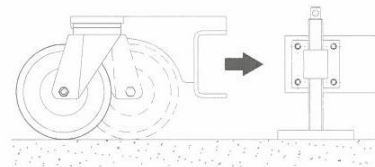


Compatibile con:  
*Interchangeability:*

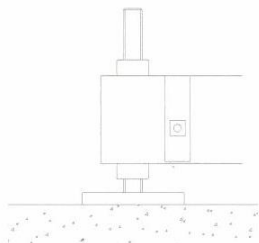
EHM 2500/10  
EHM 2500/15  
EHM 2500/25  
EHM 2500/35  
EHPM 2500/10  
EHPM 2500/15  
EHPM 2500/25  
EHPM 2500/35  
EHP 1200  
EHP 1500



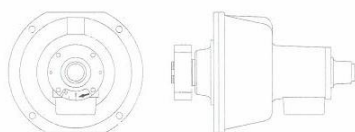
Configurazioni d'accesso possibili  
*Possible access configurations*



Kit ruote pivotanti  
per movimentazione a terra  
*Rotating wheel kit  
for quick positioning*



Quattro vitoni di livellamento  
*Four levelling screw-jacks*



Freno d'emergenza  
ad arresto progressivo  
*Overspeed safety device  
with progressive stop*

